



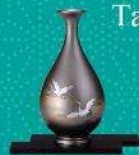
# Exploring Takaoka's Copperware (Takaoka Dōki)



Traditional crafts

## 高岡銅器

Takaoka Copperware (Takaoka Dōki)



Takaoka City



### 400 Years of Heritage: Takaoka's Metal Casting Techniques

The metal casting industry of Takaoka, which began in 1611, was first centered on ironware such as pots, cauldrons and hoes. However, sophisticated metal processing techniques developed in the creation of Buddhist altar fittings and artistic crafts using copper alloys. In recent years, a variety of interior décor items with excellent design are sold across Europe and North America. The bronze statues of Doraemon and Sazae-san were also made in Takaoka.



Metal Casting Experience!



### 4 Takaoka Regional Industrial Center (Public Interest Incorporated Foundation)



A variety of copperware is displayed and sold here; you can experience casting your own metal-ware such as sake cups (guinom) and mini water basins. Cost: 2300 yen  
1-1 Kaihatsujonmachi, Takaoka City  
TEL +81-766-25-8283  
Opening Hours: 9:30 am ~ 5 pm

### Recommended Route (Half-Day)

- Shin-Takaoka Station
- ↓ 5 minutes by shuttle bus (160 yen)
- 1 National Treasure: Takaoka Zuiryūji Temple
- ↓ 20-minute walk
- 2 Great Buddha of Takaoka
- ↓ 20-minute walk
- 3 Kanayamachi (Birthplace of Takaoka's Metal Casting Industry)
- Enjoy your lunch here
- Take a Walk (Takaoka Casting Museum, etc.)
- ↓ 10 minutes by taxi
- 4 Casting Experience at Takaoka Regional Industrial Center
- ↓ 20 minutes by taxi
- Shin-Takaoka Station

### Other places where you can experience making copperware/ironware Reservation needed in advance

#### Otera Kohachiro Antique Gallery

6-9 Kanayamachi, Takaoka City  
TEL +81-766-25-1911  
Opening Hours: 9 am ~ 5 pm



#### Shimatani Syouryu Kobo Ltd.

4-2 Sengokumachi, Takaoka City  
TEL +81-766-22-4727  
Opening Hours: 8 am ~ 6 pm



#### Nousaku Corporation Inc.

8-1 Office Park, Takaoka City  
TEL +81-766-63-0001  
Opening Hours: 9:30 am ~ 6 pm



#### Koizumi Seisakusho Inc.

57-5 Taiesakamachi, Takaoka City  
TEL +81-766-63-6590  
Opening Hours: 8 am ~ 5 pm



#### Nakamura Bijutsu Kogei

3-7-19 Naimen, Takaoka City  
TEL +81-766-22-6409  
Opening Hours: 9 am ~ 6 pm



#### Risaburo Metal Casting Studio

8-11 Kanayamachi, Takaoka City  
TEL +81-766-24-0852  
Opening Hours: 10 am ~ 6 pm



Living National Treasure: Ozawa Komin (Preserver of the Important Intangible Cultural Property *Chūkin*, in the category of metalworking).



### 1 National Treasure: Takaoka Zuiryūji Temple

Temple commemorating Maeda Toshinaga (second lord of the Maeda family), the founder of Takaoka who invited 7 skilled metal casters to his castle-town. 35 Sekihonmachi, Takaoka City



### 2 Great Buddha of Takaoka

Once qualified by the waka poet Akiko Yosano as being "significantly more handsome than the one in Kamakura," Takaoka's Great Buddha, the crystallization of Takaoka's bronze casting techniques, is one of the three Great Buddhas of Japan. 11-29 Otemachi, Takaoka City



### 3 Kanayamachi (Birthplace of Takaoka's Metal Casting Industry)

The town area where the seven metal casters gathered by Toshinaga used to live. You can see houses decorated with delicate latticework (*senbon-goshi*) and beautiful stone-paved streets.